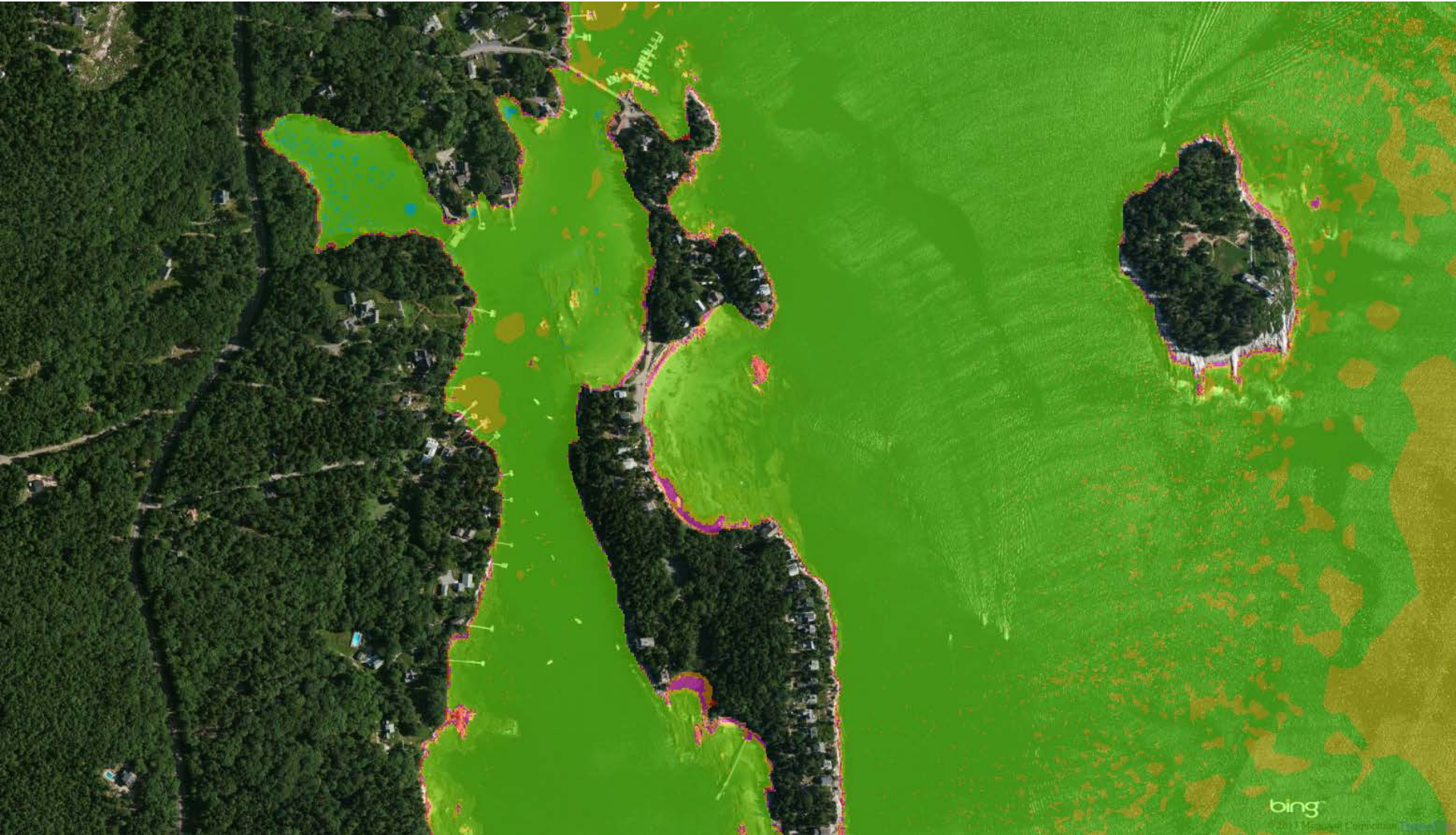


Capitol Island HAT



Roads



Railroads



0-1



1-2



2-3



3-4



4-5



5-6



6-7



7-8



8-9



9-10



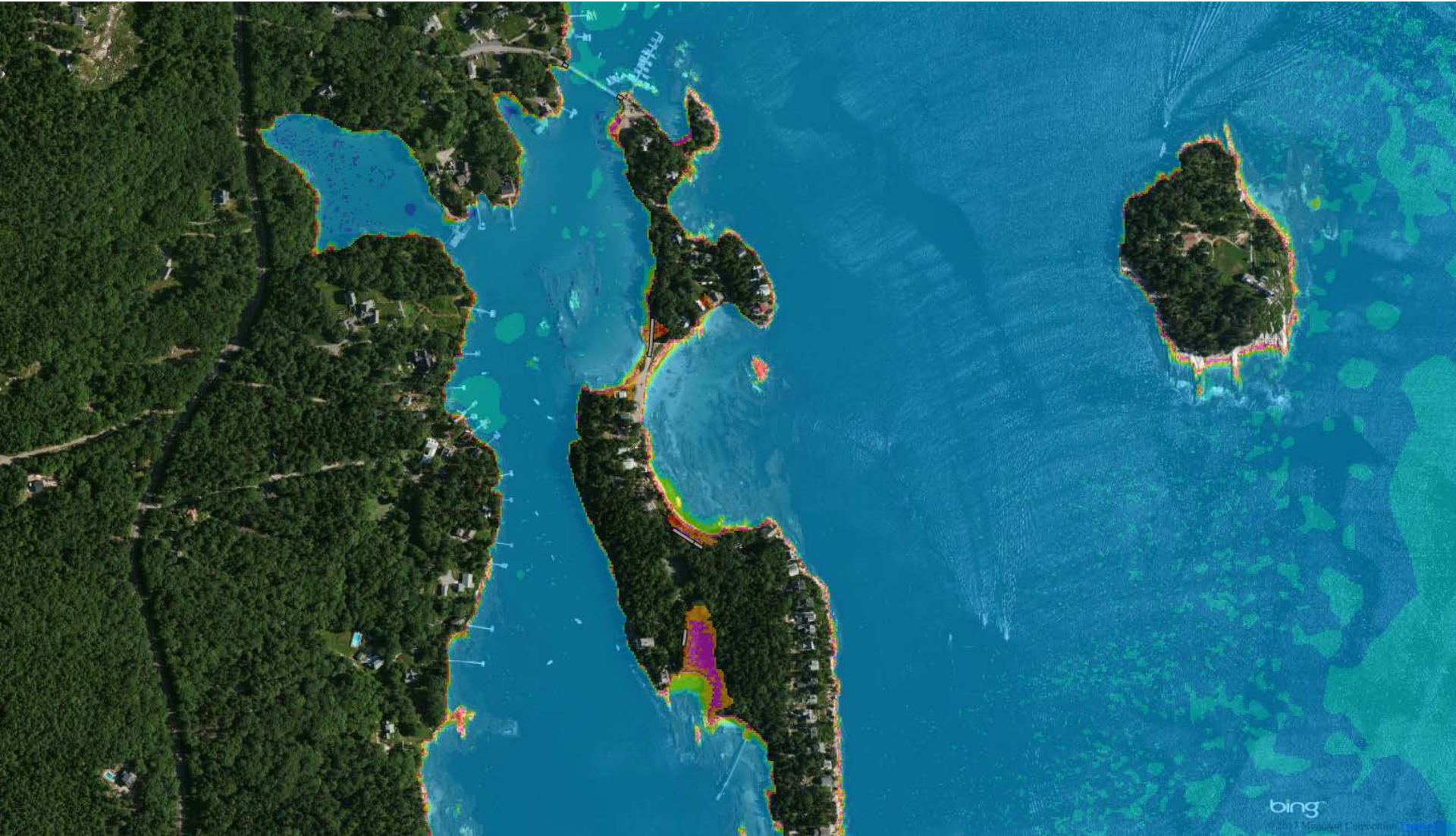
10-18



Capitol Island HAT + 0.3 m



Capitol Island HAT + 0.6 m



Roads



Railroads



0-1



1-2



2-3



3-4



4-5



5-6



6-7



7-8



8-9



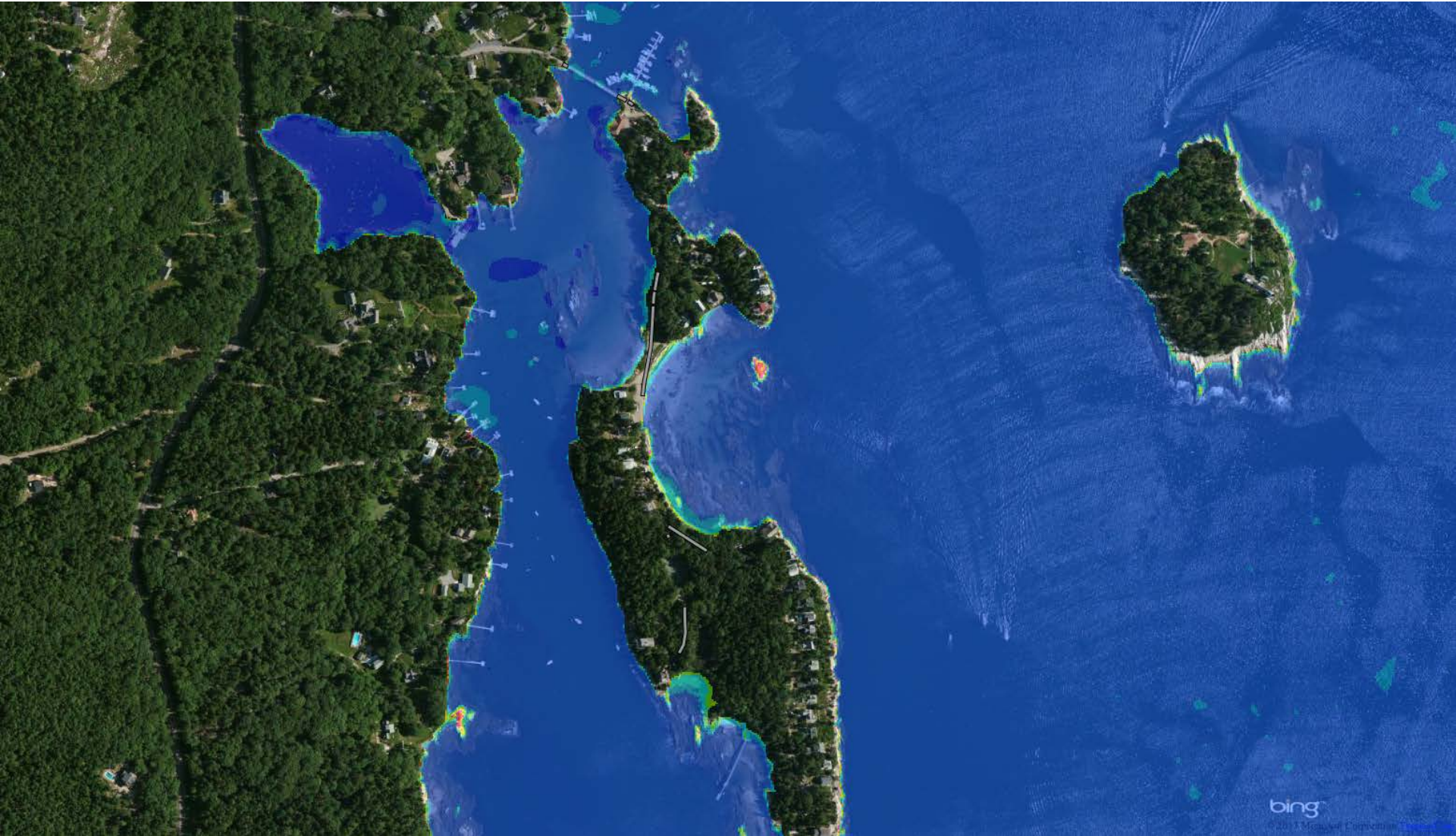
9-10



10-18



Capitol Island HAT + 1.0 m



Roads



Railroads



0-1



1-2



2-3



3-4



4-5



5-6



6-7



7-8



8-9



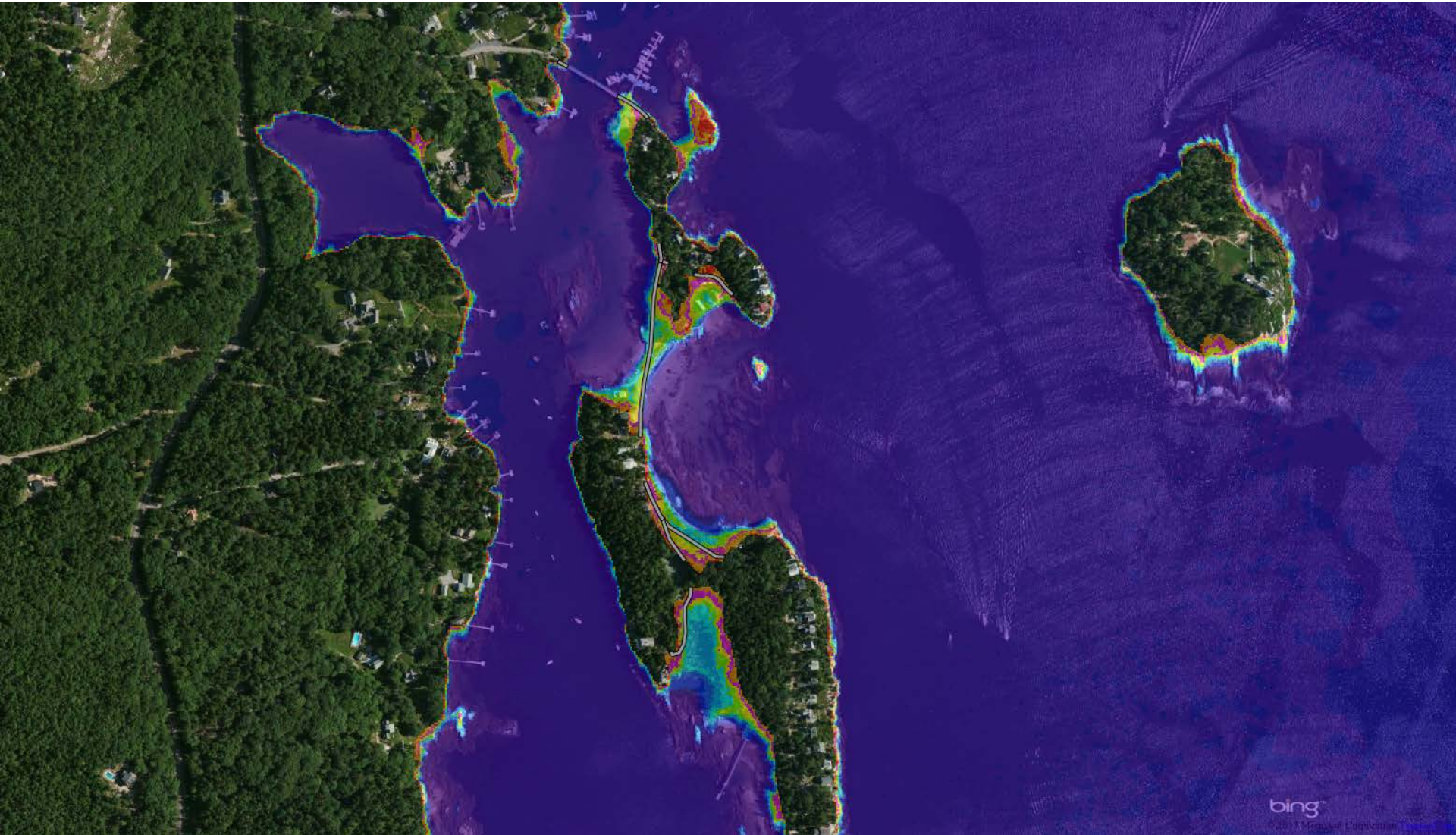
9-10



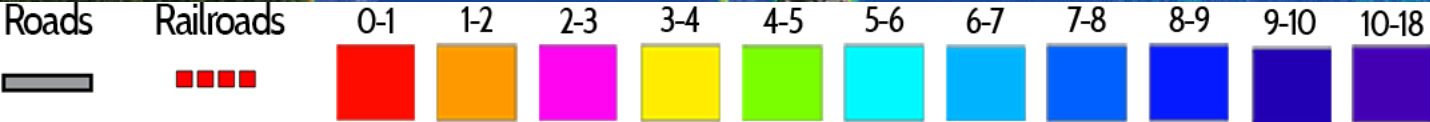
10-18



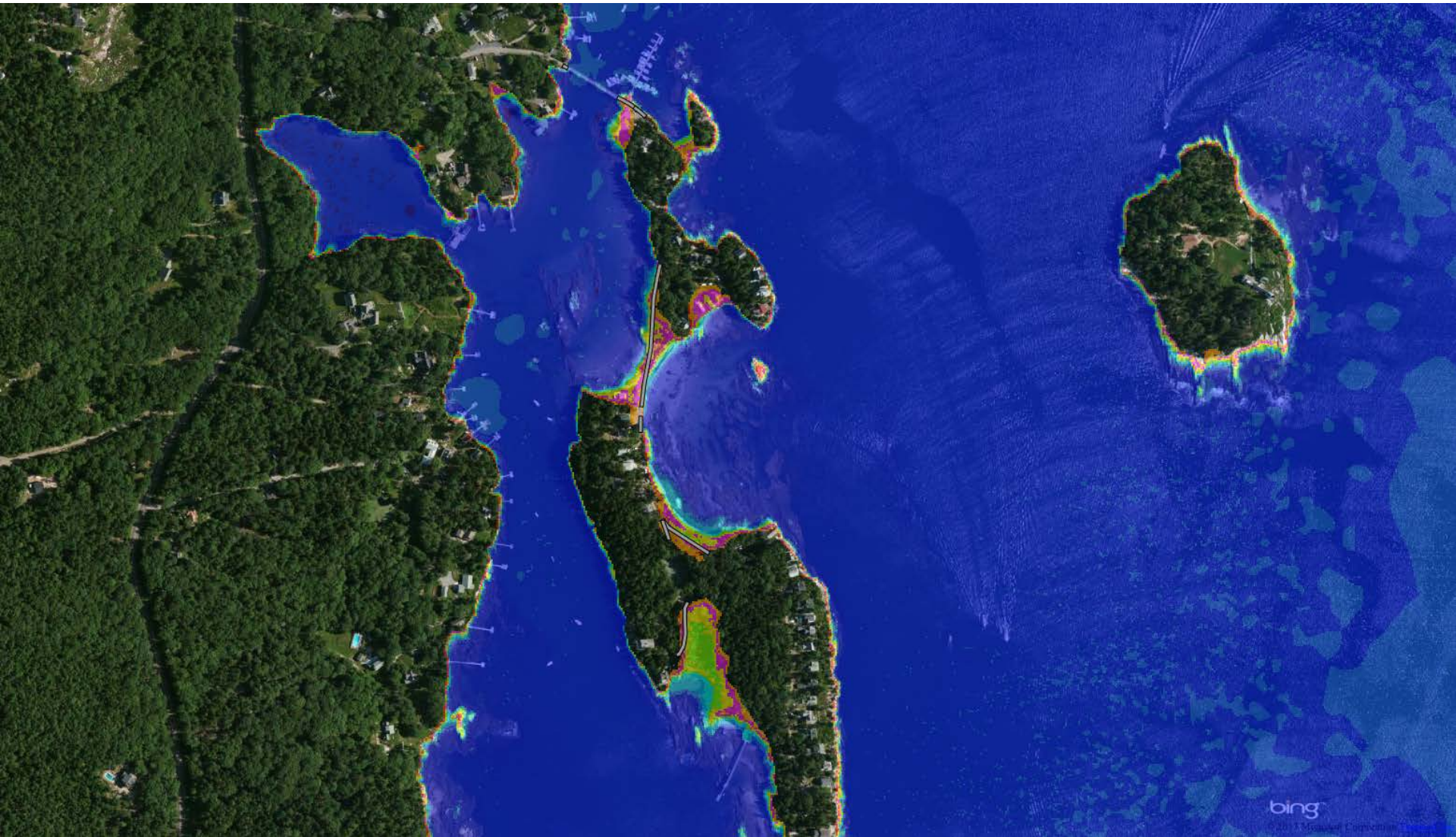
Capitol Island HAT + 1.8 m



Capitol Island 100-year storm



Capitol Island 100-year storm + 0.3 m



Roads



Railroads



0-1



1-2



2-3



3-4



4-5



5-6



6-7



7-8



8-9



9-10



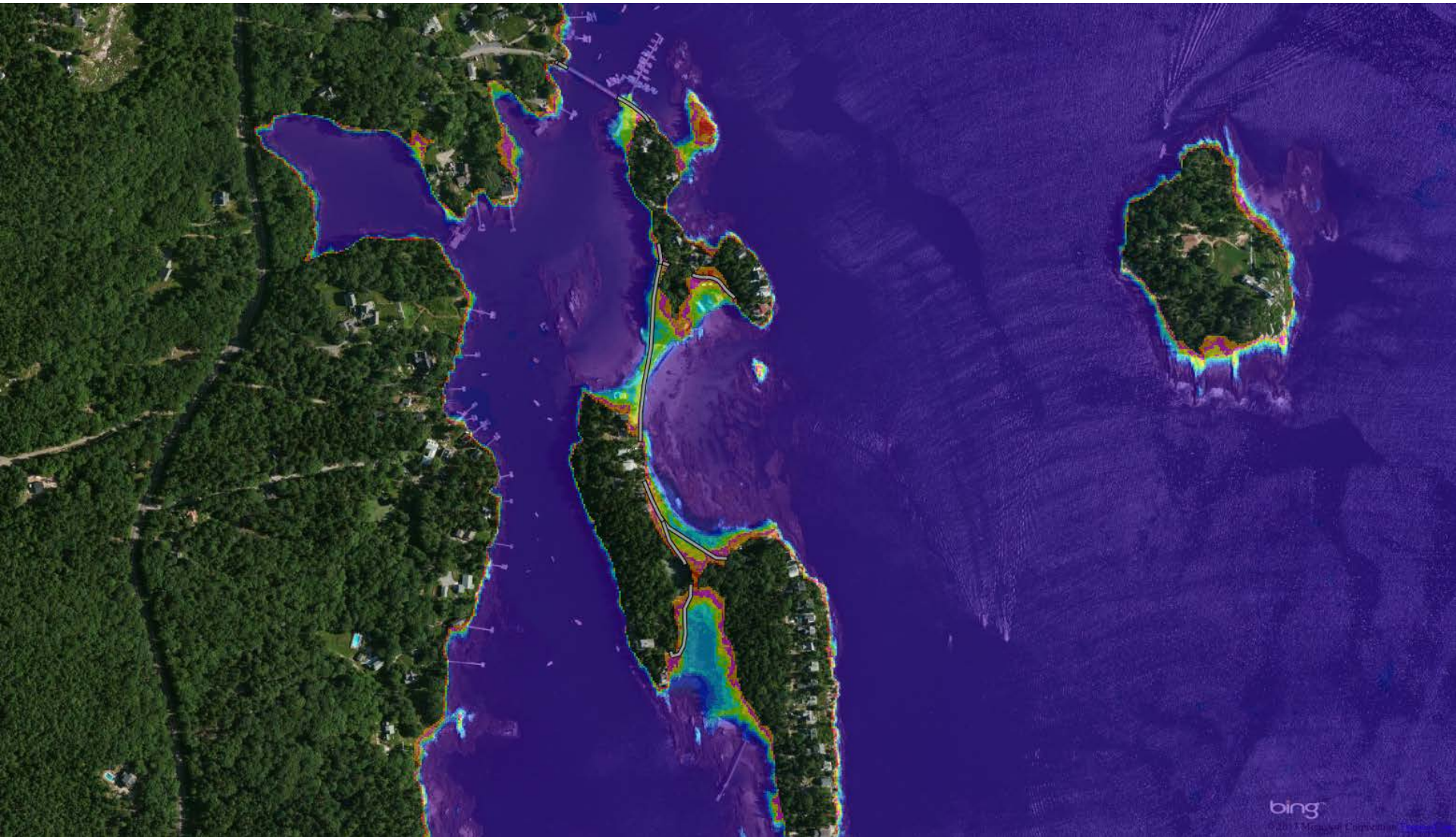
10-18



Capitol Island 100-year storm + 0.6 m



Capitol Island 100-year storm + 1.0 m



Roads



Railroads



0-1



1-2



2-3



3-4



4-5



5-6



6-7



7-8



8-9



9-10



10-18



Capitol Island 100-year storm + 1.8 m

